

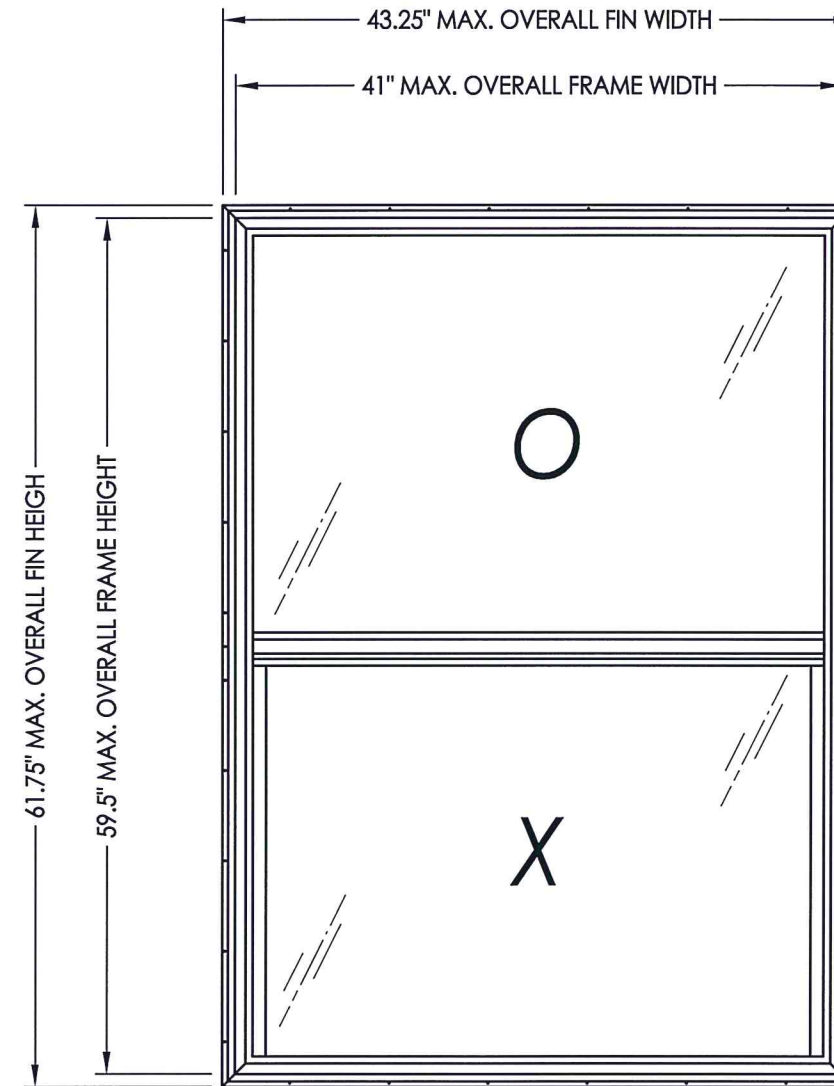
4450 Single Hung Window

IMPACT RATED - HVHZ
w/ Nailing Fin

GENERAL NOTES

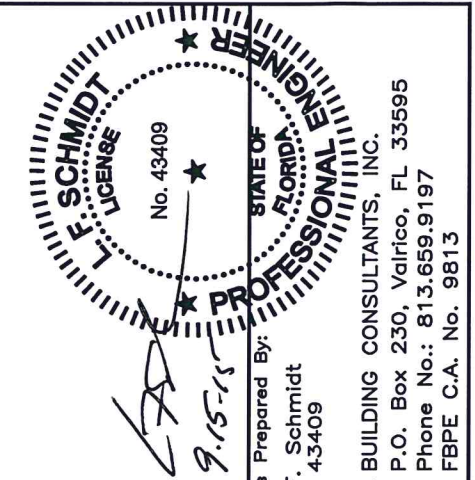
1. This product anchoring drawing has been evaluated and is in compliance with the 5th Edition (2014) Florida Building Code (FBC) including the "High Velocity Hurricane Zone" (HVHZ). See the Certification Agency Certificate for sizes, specifications & ratings.
2. Product anchors shall be as listed and spaced as shown on details. Anchor embedment to base material shall be beyond wall dressing or stucco.
3. When used in the "HVHZ", this product complies with Section 1626 of the Florida Building Code and does not require an impact resistant covering.
4. Site conditions that deviate from the details of this drawing require further engineering analysis by a licensed engineer or registered architect.

TABLE OF CONTENTS	
SHEET#	DESCRIPTION
1	Typical elevations, design pressures & general notes
2	Vertical & horizontal cross sections
3	Vertical & horizontal cross sections
4	Buck & frame anchoring
5	Bill of materials, glazing details and components



MAX. O.A. FIN DIMENSION	MAX. O.A. FRAME DIMENSION	MAX. SASH D.L.O. DIMENSION	MAX. FIXED D.L.O. DIMENSION	GLASS TYPE	DESIGN PRESSURE (PSF)	
					POSITIVE	NEGATIVE
43.25" x 61.75"	41" X 59.5"	35.0" X 25.06"	37.88" X 26.88"	G1	+60.0	-65.0

Note: This product is not approved for use above 30 feet in the "HVHZ".



Documents Prepared By:
Lyndon F. Schmidt
P.E. No. 43409

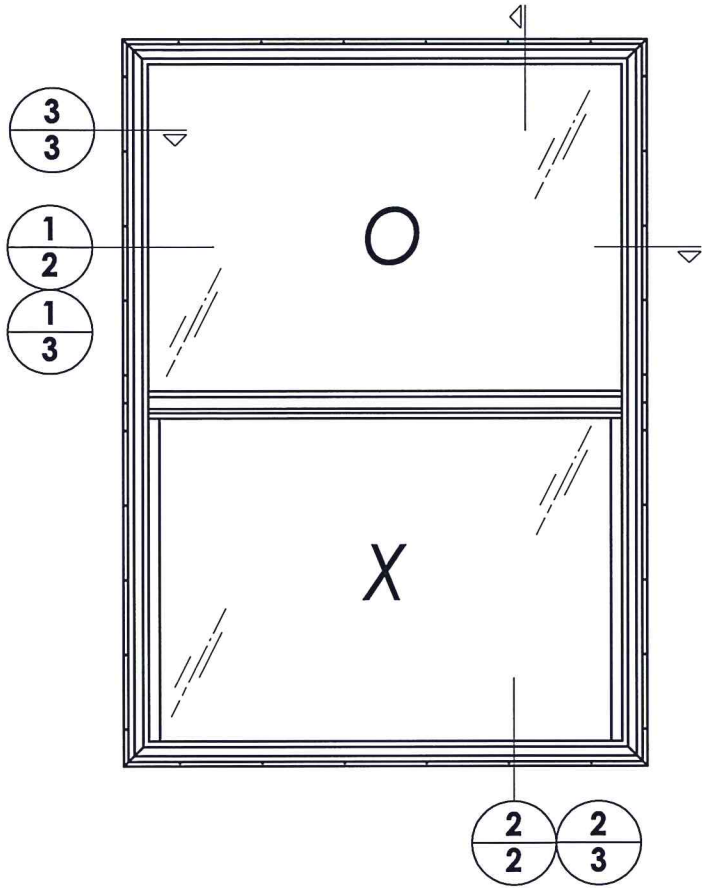
R.W. BUILDING CONSULTANTS, INC.
P.O. Box 230, Vairico, FL 33595
Phone No.: 813.659.9197
FBPE C.A. No. 9813

PRODUCT: SINGLE HUNG WINDOW
PART OR ASSEMBLY: TYPICAL ELEVATION, DESIGN PRESSURES & GENERAL NOTES

NO.	DATE	BY	REVISIONS

DATE: 6/26/15
SCALE: N.T.S.
DWG. BY: JK
CHK. BY: LFS
DRAWING NO.: FL-16854.11
SHEET 1 of 5

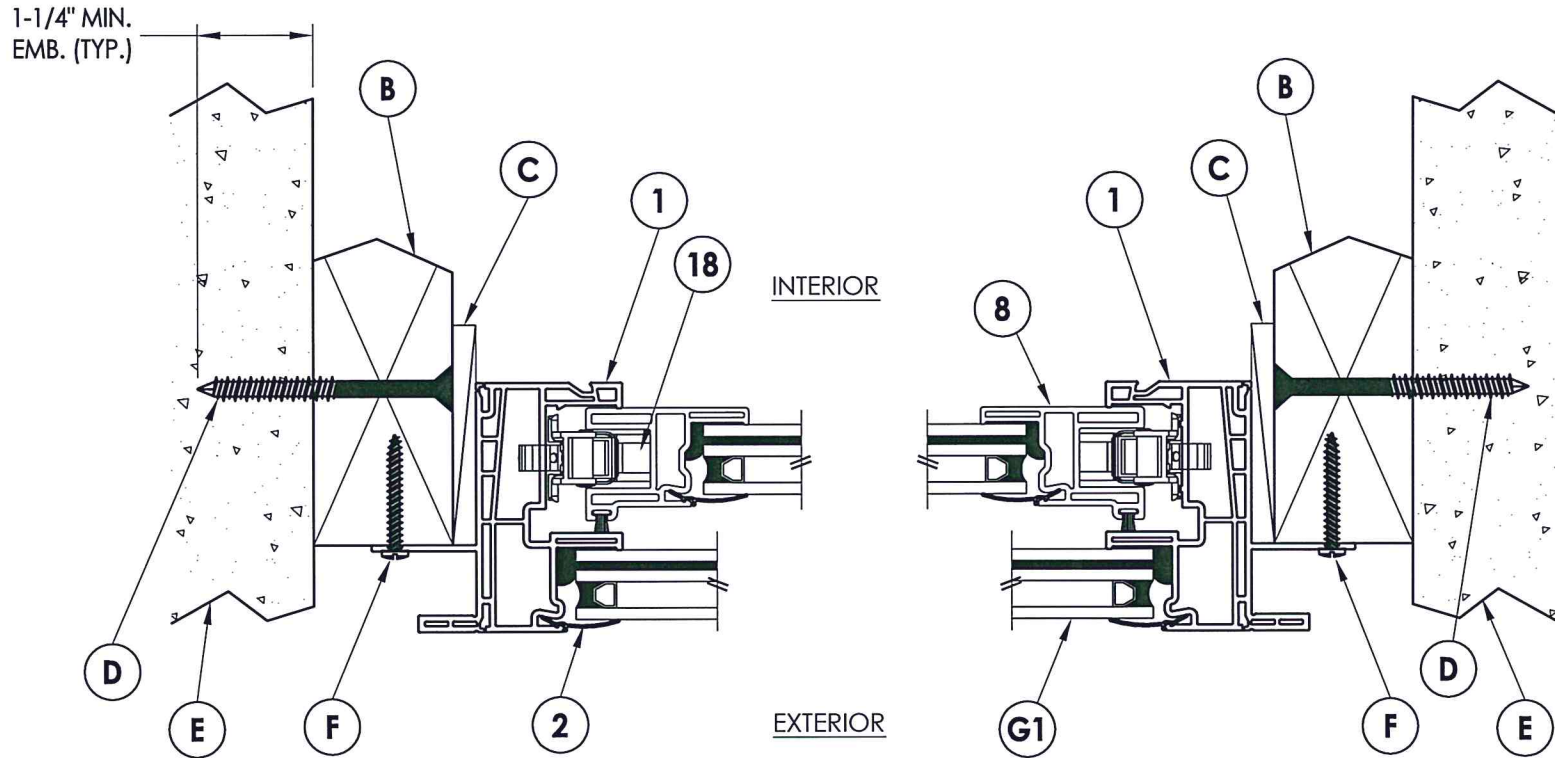
R:\Clients\Doers PERMANENTVA - Florida Product Approvals\FL-16854 Windows - Single Hung\C - Drawings\FL-16854 (2014)\FL-16854.7-14.dwg, 2.4



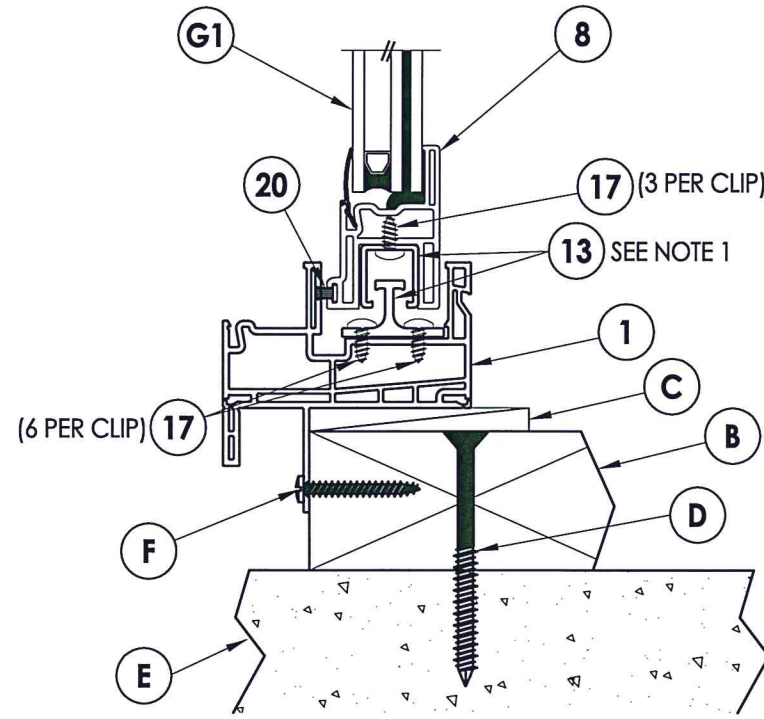
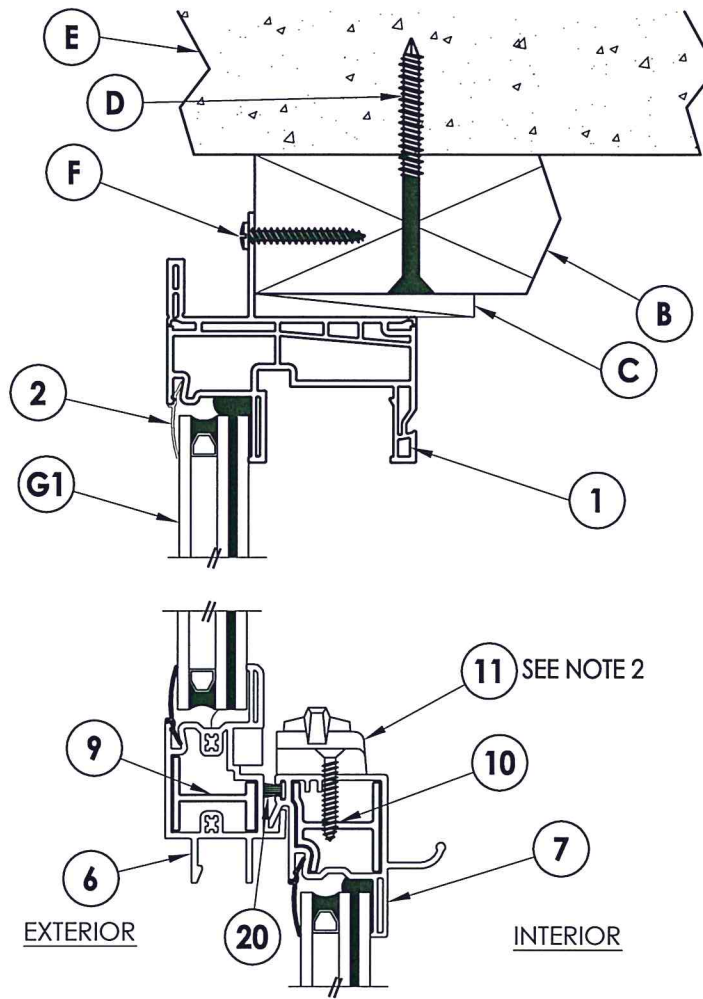
NOTES:

- 1. Sill interlock clip locations: 5-1/2" from each end and 1 @ centerline along sill (3 total).
- 2. Lock and keeper located 7" from each end of meeting rail.

1-1/4" MIN.
EMB. (TYP.)



1 **HORIZONTAL CROSS SECTION**
2 2X Buck Masonry Construction



2 **VERTICAL CROSS SECTION**
2 2X Buck Masonry Construction

LFS
 9-15-15

Documents Prepared By:
 Lyndon F. Schmidt
 P.E. No. 43409

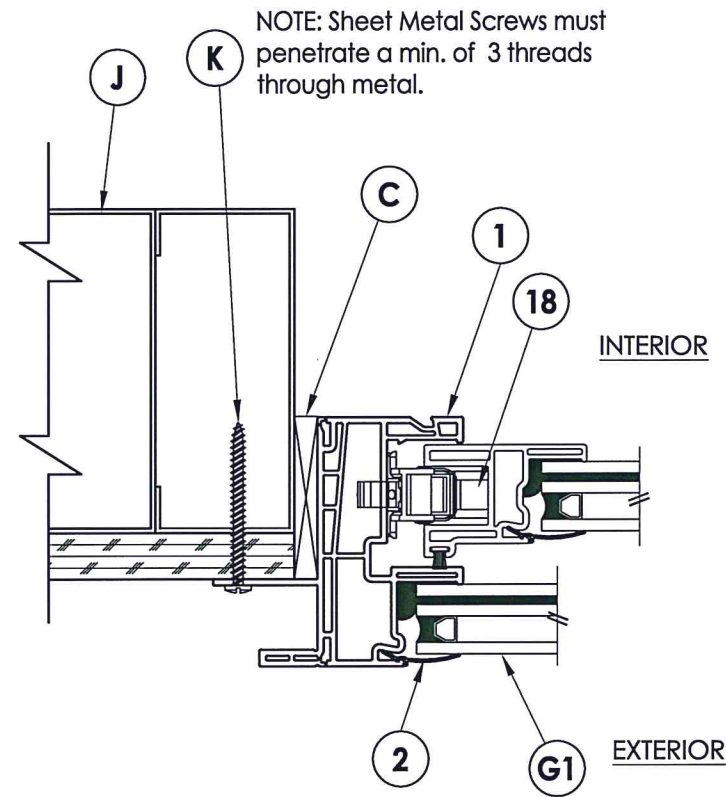
RW BUILDING CONSULTANTS, INC.
 P.O. Box 230, Valrico, FL 33595
 Phone No.: 813.659.9197
 FBPE C.A. No. 9813

PRODUCT: SINGLE HUNG WINDOW		REVISIONS
PART OR ASSEMBLY: VERTICAL & HORIZONTAL CROSS SECTIONS		
NO.	DATE	BY
DATE: 6/26/15		
SCALE: N.T.S.		
DWG. BY: JK		
CHK. BY: LFS		
DRAWING NO.: FL-16854.11		
SHEET 2 OF 5		

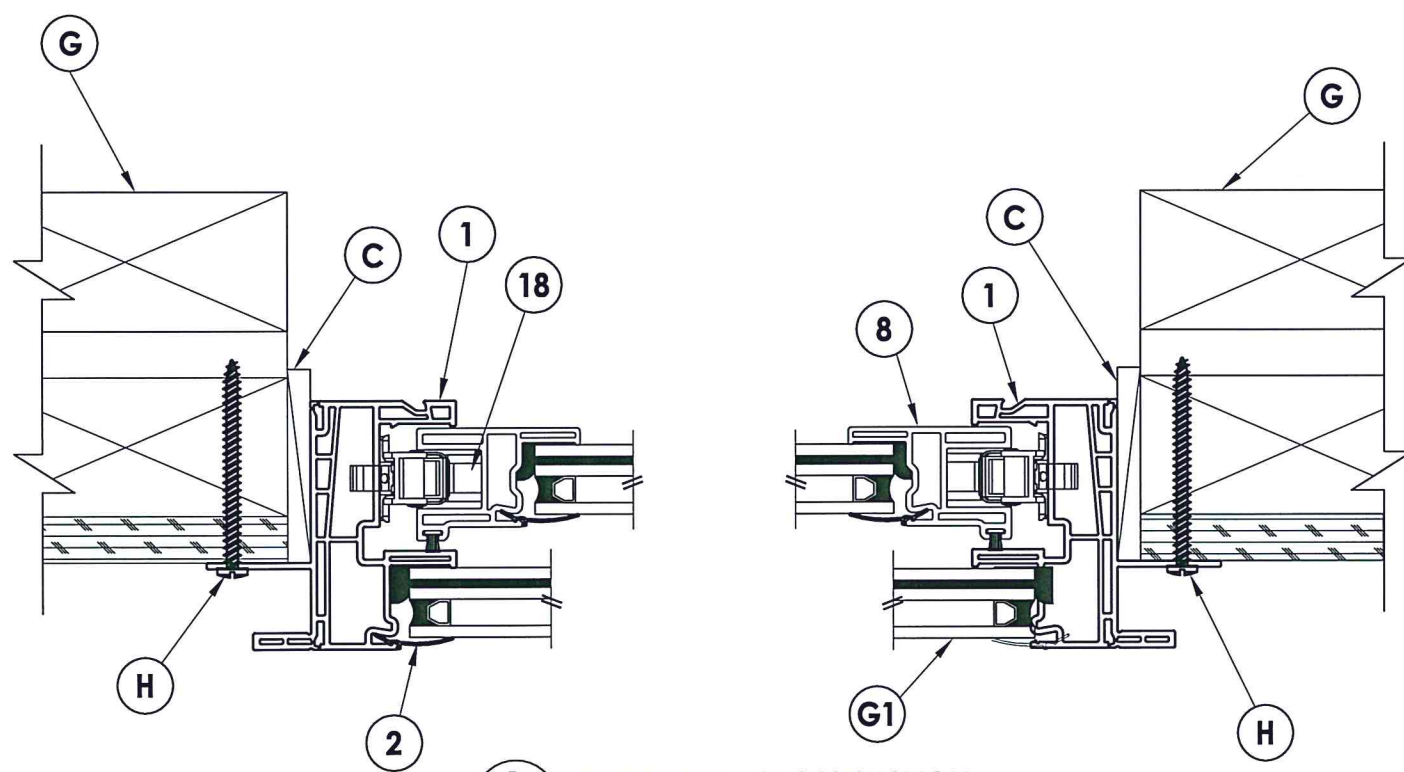
R:\Clients\Doers PERMANENTVA - Florida Product Approvals\FL-16854 Windows - Single Hung\C - Drawings\FL-16854 (2014)\FL-16854.7-14.dwg, 3.4

NOTES:

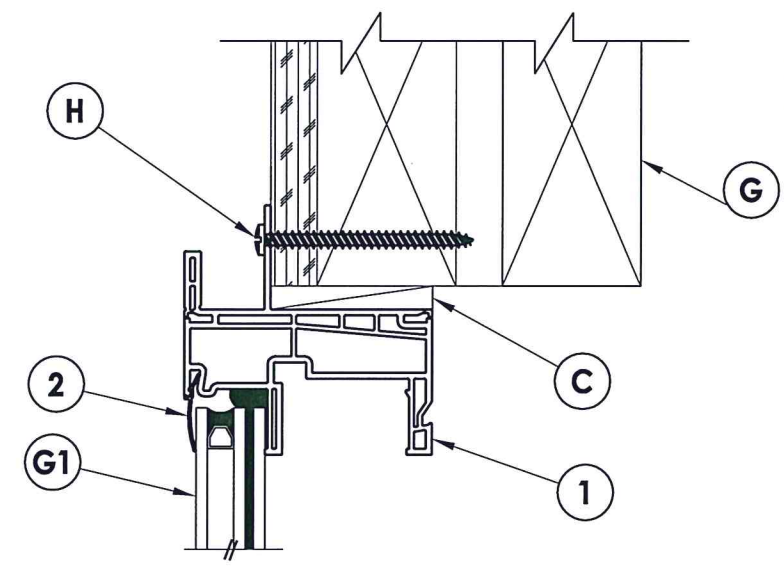
- Sill interlock clip locations: 5-1/2" from each end and 1 @ centerline along sill (3 total).
- Lock and keeper located 7" from each end of meeting rail.



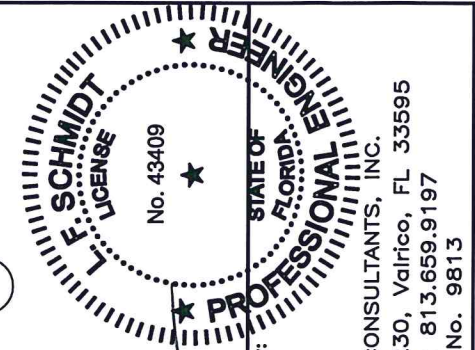
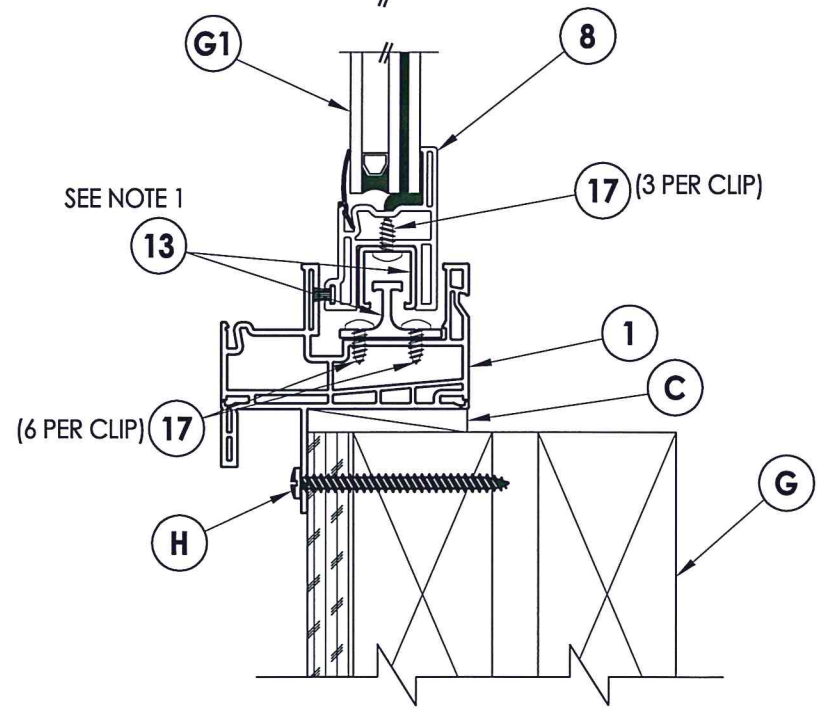
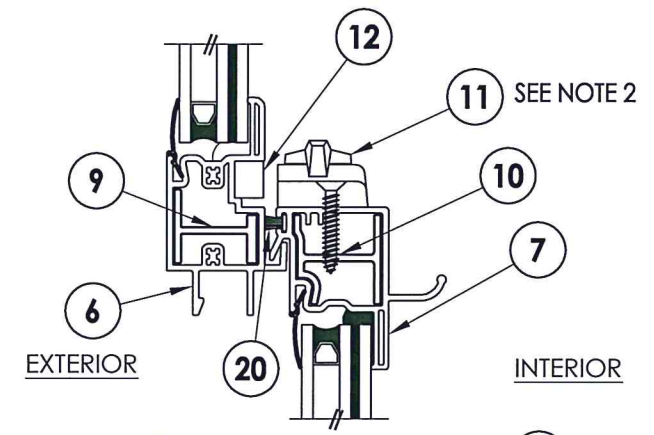
3 HORIZONTAL CROSS SECTION
Shown w/ Steel Stud Framing Option



1 HORIZONTAL CROSS SECTION
3 Stud Construction



2 VERTICAL CROSS SECTION
3 Stud Construction

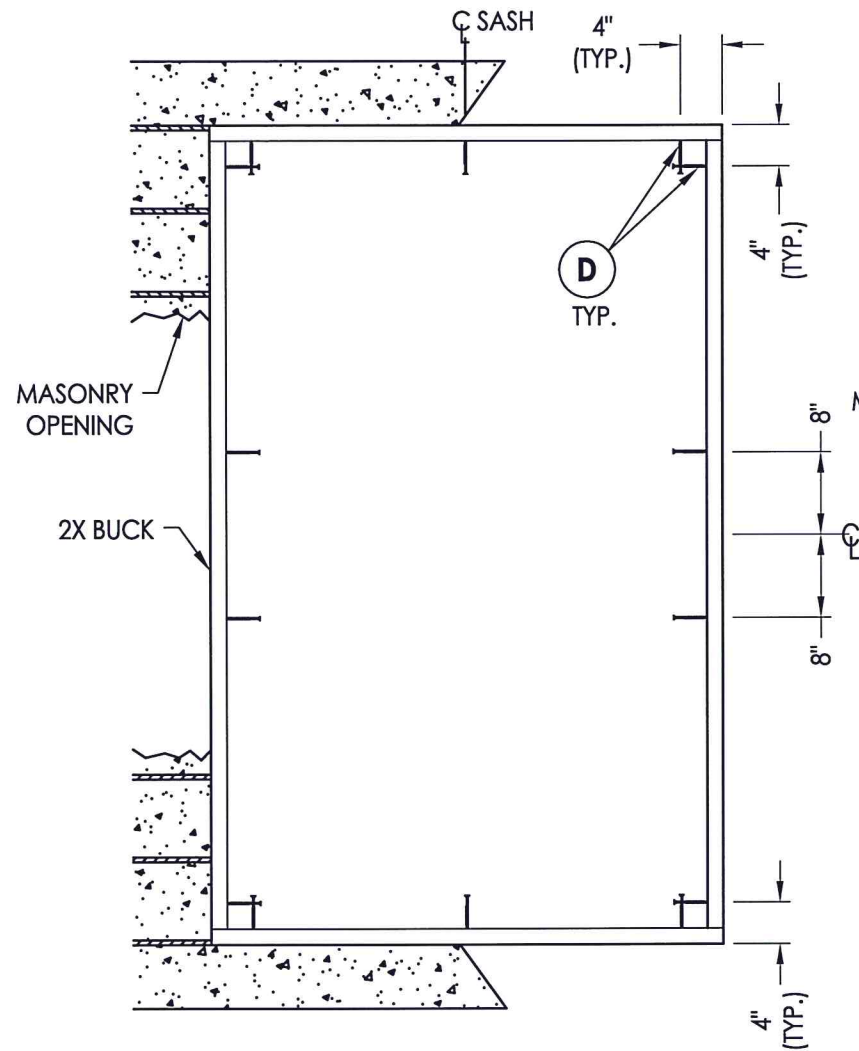


Documents Prepared By:
Lyndon F. Schmidt
P.E. No. 43409
9-15-15
R.W. BUILDING CONSULTANTS, INC.
P.O. Box 230, Valrico, FL 33595
Phone No.: 813.659.9197
FBPE C.A. No. 9813

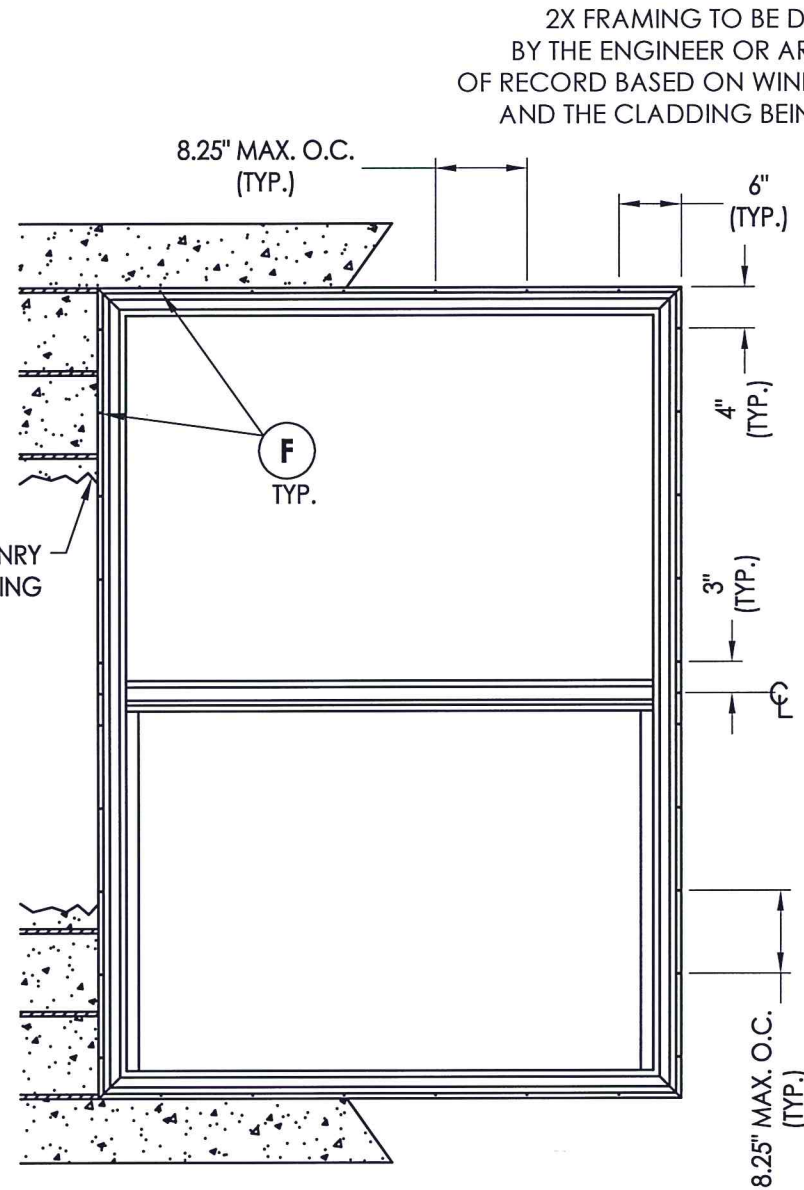
PRODUCT: SINGLE HUNG WINDOW
PART OR ASSEMBLY: VERTICAL & HORIZONTAL CROSS SECTIONS

NO.	DATE	BY

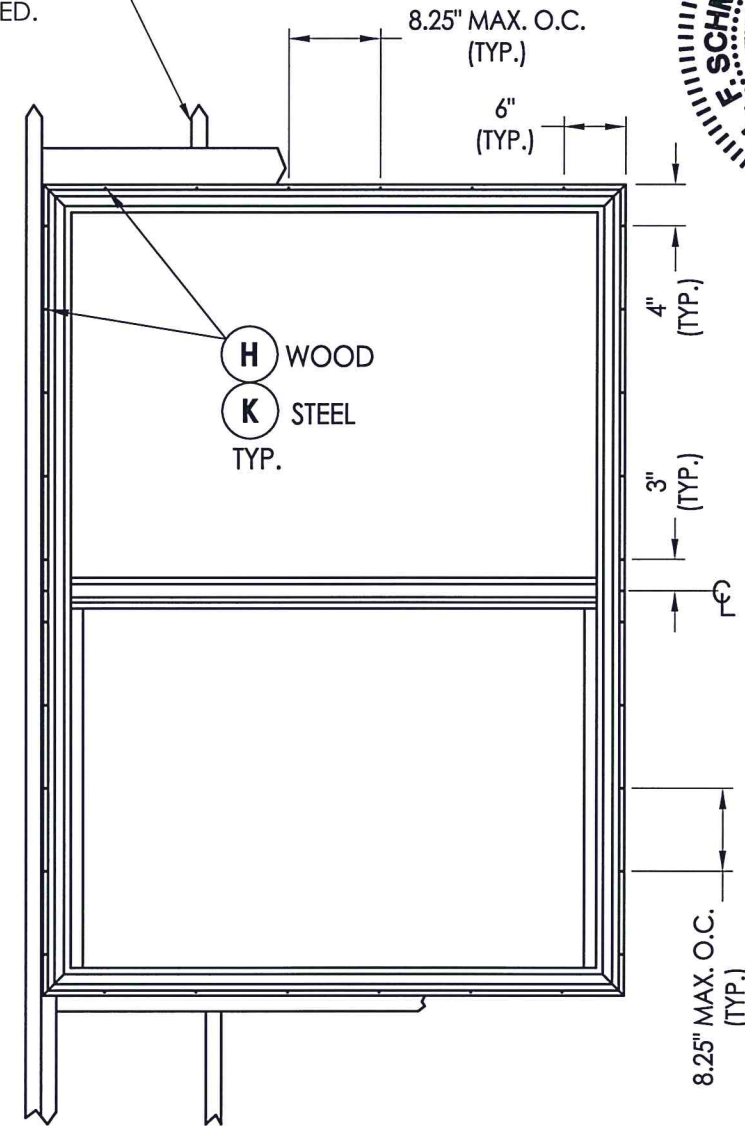
DATE: 6/26/15
SCALE: N.T.S.
DWG. BY: JK
CHK. BY: LFS
DRAWING NO.: FL-16854.11
SHEET 3 OF 5



BUCK ANCHORING

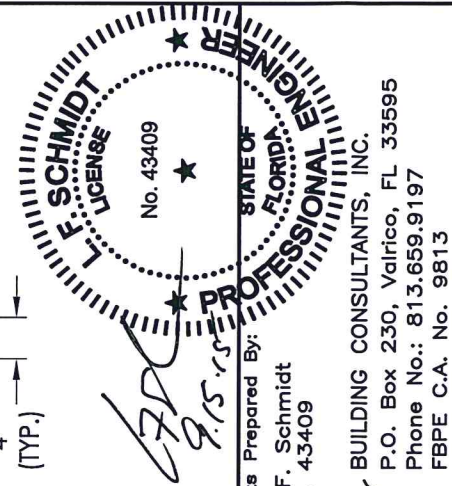


**FRAME ANCHORING
MASONRY CONSTRUCTION**



**FRAME ANCHORING
STUD CONSTRUCTION**

2X FRAMING TO BE DESIGNED BY THE ENGINEER OR ARCHITECT OF RECORD BASED ON WIND LOADS AND THE CLADDING BEING USED.



Documents Prepared By:
Lyndon F. Schmidt
P.E. No. 43409
RW BUILDING CONSULTANTS, INC.
P.O. Box 230, Vairico, FL 33595
Phone No.: 813.659.9197
FBPE C.A. No. 9813

PRODUCT: SINGLE HUNG WINDOW
PART OR ASSEMBLY: BUCK & FRAME ANCHORING

NO.	DATE	BY	REVISIONS

DATE: 6/26/15
SCALE: N.T.S.
DWG. BY: JK
CHK. BY: LFS
DRAWING NO.: FL-16854.11
SHEET 4 OF 5

CONCRETE ANCHOR NOTES:

1. Concrete anchor locations at the corners may be adjusted to maintain the min. edge distance to mortar joints.
2. Concrete anchor locations noted as "MAX. ON CENTER" must be adjusted to maintain the min. edge distance to mortar joints, additional concrete anchors may be required to ensure the "MAX. ON CENTER" dimension are not exceeded.
3. Concrete anchor table:

ANCHOR TYPE	ANCHOR SIZE	MIN. EMBEDMENT	MIN. CLEARANCE TO MASONRY EDGE	MIN. CLEARANCE TO ADJACENT ANCHOR
ITW TAPCON®	1/4"	1-1/4"	2"	4"
ELCO ULTRACON®	1/4"	1-1/4"	1"	4"

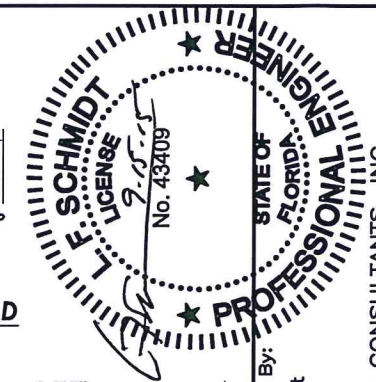
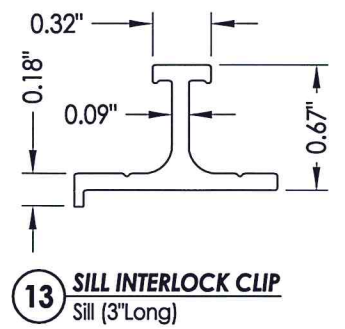
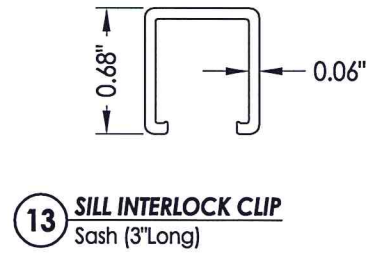
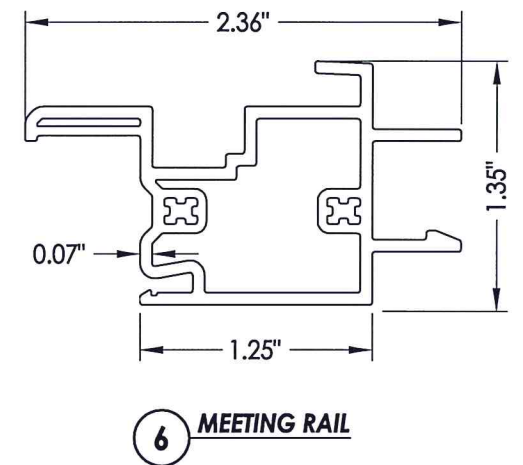
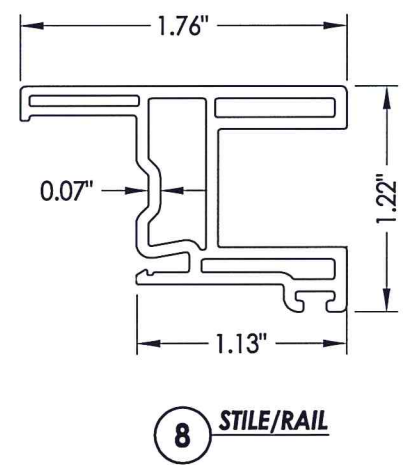
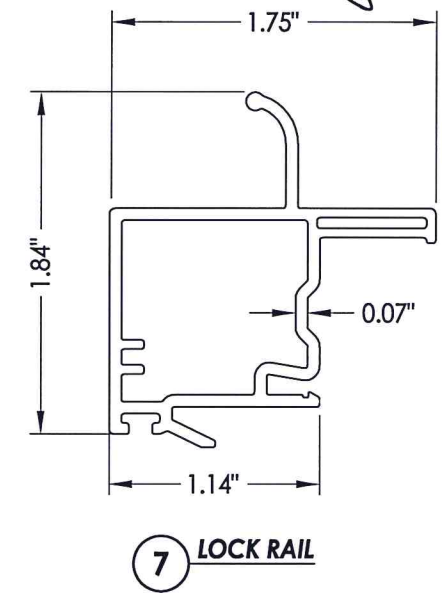
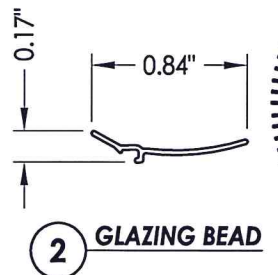
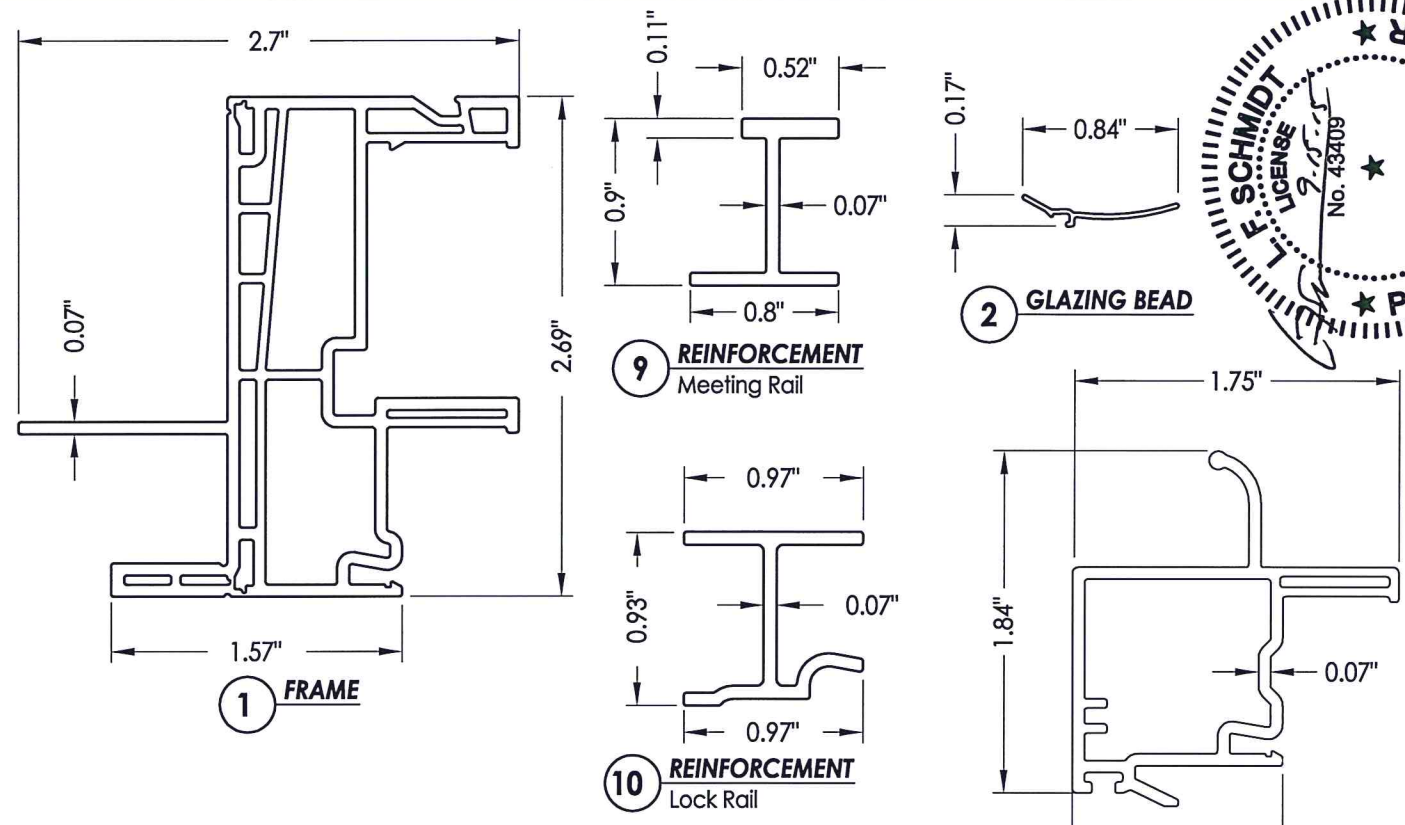
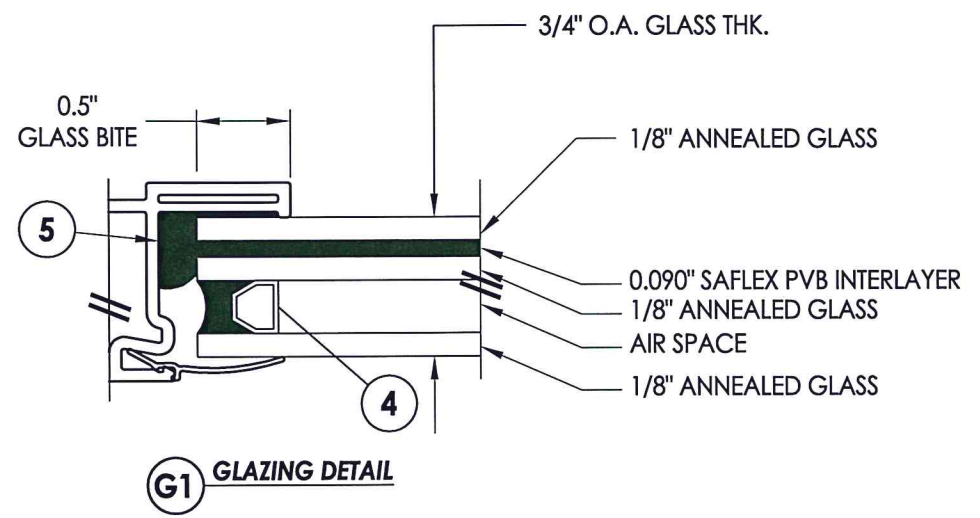
WOOD SCREW INSTALLATION NOTES:

1. Maintain a minimum 5/8" edge distance, 1" end distance, & 1" o.c. spacing of wood screws to prevent the splitting of wood.

R:\Clients\Doers PERMANENTVA - Florida Product Approvals\FL-16854 Windows - Single Hung\C - Drawings\FL-16854 (2014)\FL-16854.7-14.dwg, 5.4

BILL OF MATERIALS		
ITEM #	DESCRIPTION	MATERIAL
B	2X BUCK (SG >= 0.55)	WOOD
C	1/4" MAX. SHIM SPACE	-
D	1/4" X 2-3/4" PFH ELCO OR ITW CONCRETE SCREW	STEEL
E	MASONRY - 3,000 PSI MIN. CONCRETE CONFORMING TO ACI 301 OR HOLLOW BLOCK CONFORMING TO ASTM C90	CONCRETE
F	#8 X 1-1/4" PPH SMS (1-1/8" MIN. EMBEDMENT)	STEEL
G	2X STUD (SG >= 0.55)	WOOD
H	#8 X 1-3/4" PPH SMS (1-1/8" MIN. EMBEDMENT)	STEEL
J	STEEL STUD Min. Thk .033" (ASTM A653 GRADE 33 Fy=33 ksi min., Fu=45 ksi min.)	STEEL
K	#10 PPH SELF-DRILLING SMS	STEEL
1	EXTRUDED VINYL FRAME *	RIGID PVC
2	EXTRUDED VINYL GLAZING BEAD *	RIGID PVC
3	GLASS SETTING BLOCK	-
4	GLAZING SPACER (Duraseal)	-
5	GLAZING SEALANT (Sikaflex-552)	SILICONE
6	MEETING RAIL*	RIGID PVC
7	LOCK RAIL*	RIGID PVC
8	STILE/RAIL*	RIGID PVC
9	MEETING RAIL REINFORCEMENT	ALUM
10	LOCK RAIL REINFORCEMENT	ALUM
11	SASH LOCK	-
12	KEEPER	-
13	INTERLOCK CLIP	ALUM
14	ROLLER	-
16	ROLLER TRACK*	RIGID PVC
17	#6 X 3/8" PPH SMS	STEEL
18	WINDOW BALANCE	-
20	WEATHERSTRIP (.187" X .290")	-

* THE APPROVED WHITE RIGID PVC EXTERIOR EXTRUSIONS FOR WINDOWS ARE TO BE PRODUCED BY EXTRUDERS LICENSEES IN "AAMA CERTIFICATION PROGRAMS FOR RIGID PVC EXTRUSIONS".



Documents Prepared By: Lyndon F. Schmidt
P.E. No. 43409

STATE OF FLORIDA
PROFESSIONAL ENGINEER
E. SCHMIDT
LICENSE No. 43409

PRODUCT: SINGLE HUNG WINDOW

PART OR ASSEMBLY: BILL OF MATERIALS, GLAZING DETAILS & COMPONENTS

NO.	DATE	BY	REVISIONS

DATE: 6/26/15
SCALE: N.T.S.
DWG. BY: JK
CHK. BY: LFS
DRAWING NO.: FL-16854.11
SHEET 5 OF 5

RW BUILDING CONSULTANTS, INC.
P.O. Box 230, Vairico, FL 33595
Phone No.: 813.659.9197
FBPE C.A. No. 9813